

The procedures for updating the firmware on MPPT 30A&50A

Step 1: Connect the solar charger controller and the computer with a RS232 to RJ45 cable, RS232 COMM port on computer is suggested to use for firmware update, connect battery and connect PV input to the controller to make it power on.

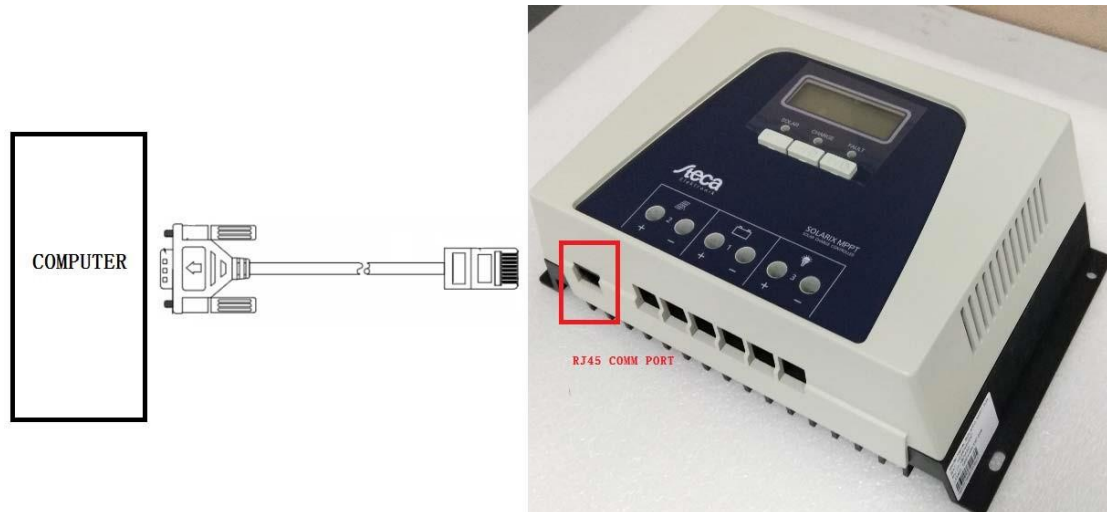


Figure 1

Step 2: Check COM port number you are using in Computer management >> Device manage >> Ports(COM & Port).

Note: Make sure all application communication software using this COM port is closed, like Monitoring software Watchpower.

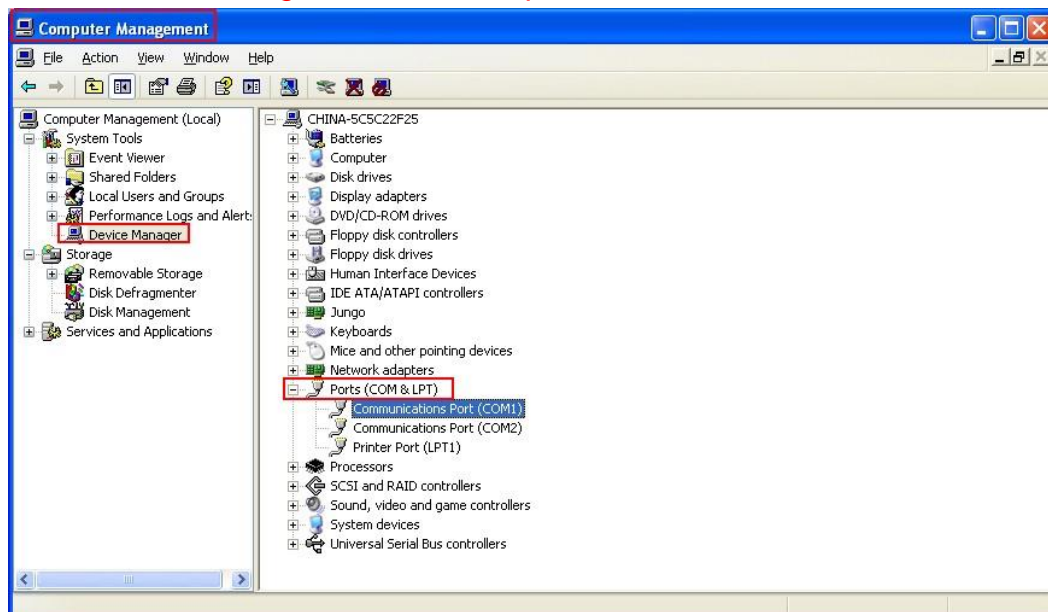


Figure 2

Step 3: Execute “SccReflashTool.exe”.

Step 4: Click interface check box to select right COM port (check in Step 2)

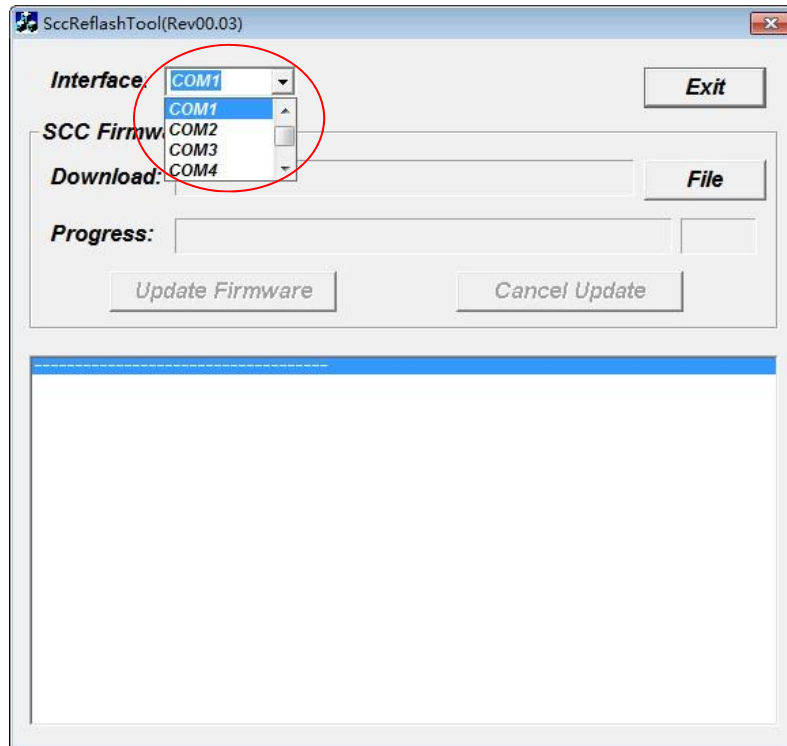
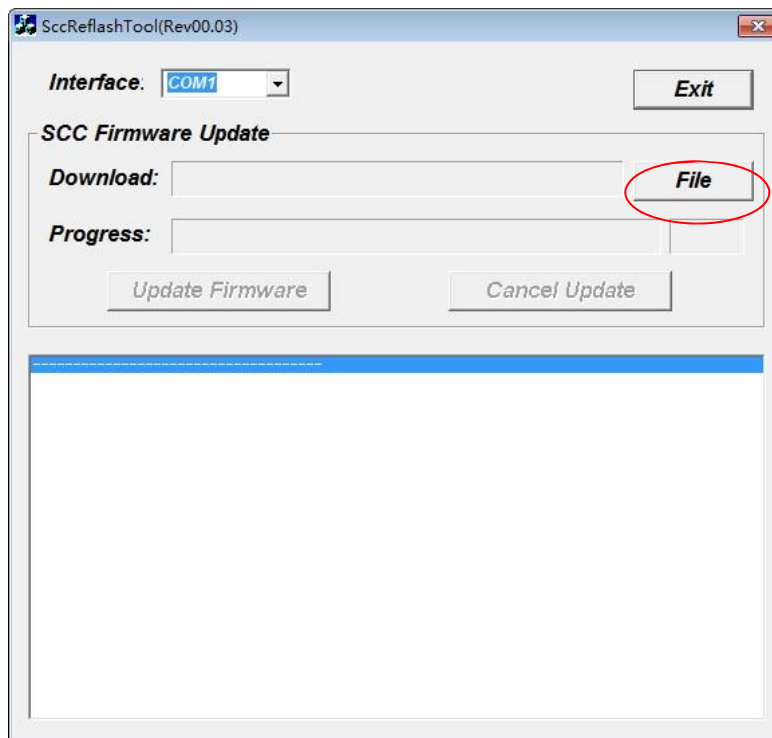


Figure 3

Step 5: Click **File** button.



Select the firmware file („.scc“), by double clicking it.

Step 6: Click **Update Firmware** button to update the firmware.

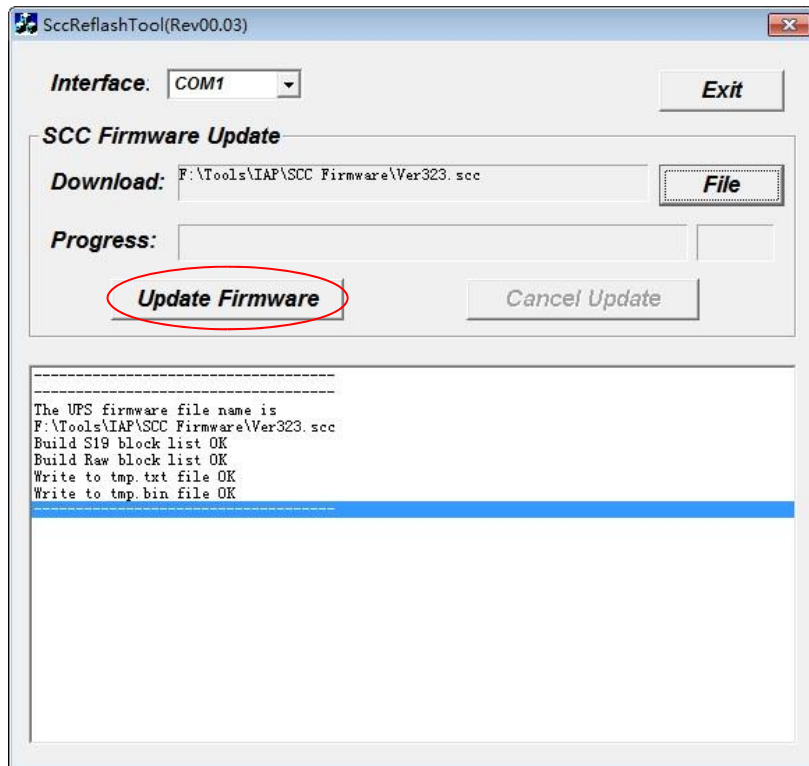


Figure 6

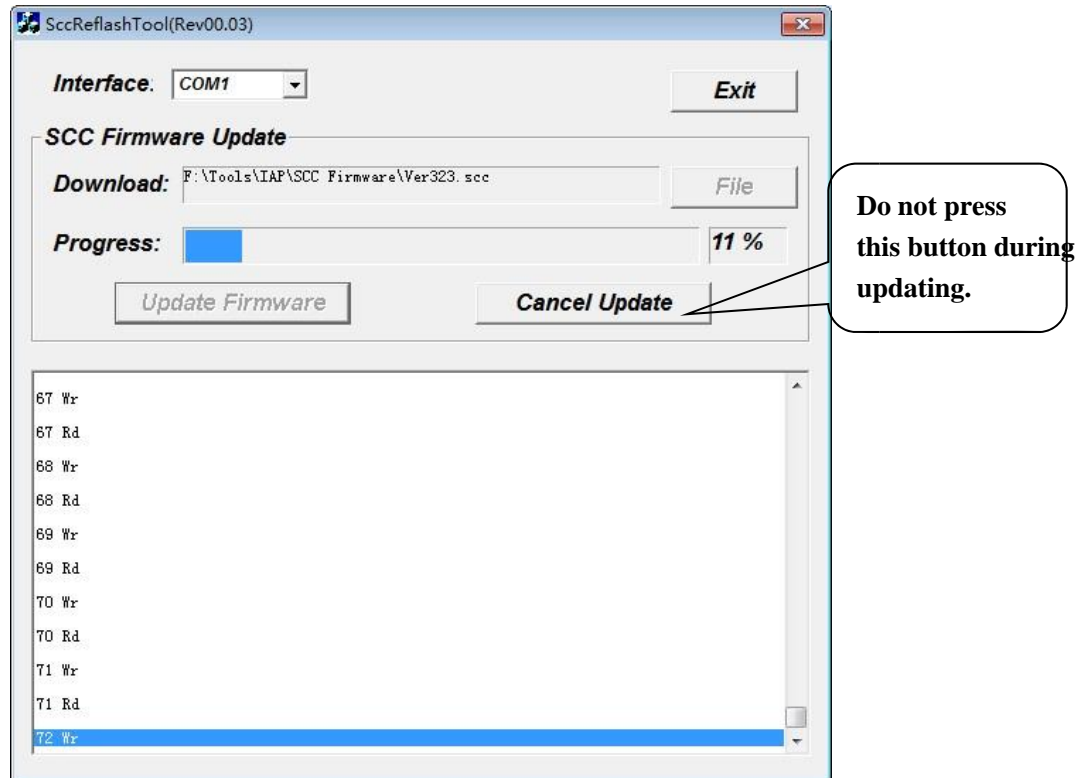


Figure 7

Step 7: When the processing bar is up to 100%, below dialog will pop-up to remind you the programming is successful! Now the software of the controller is updated completely!

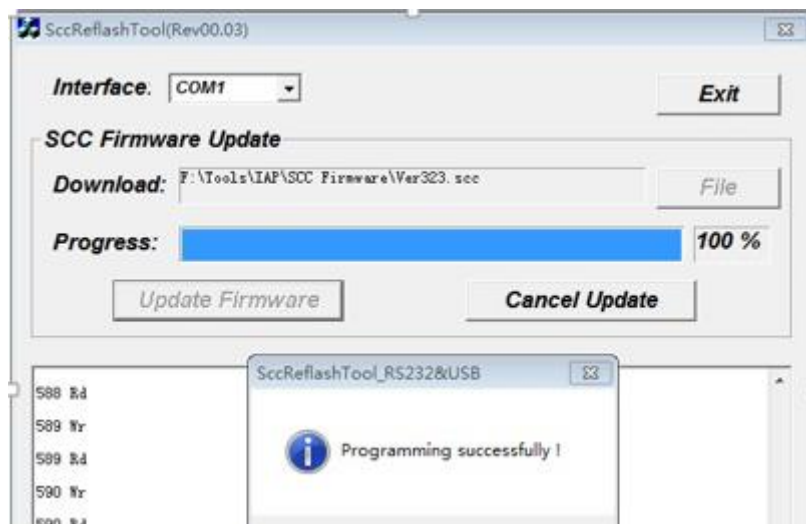


Figure 8